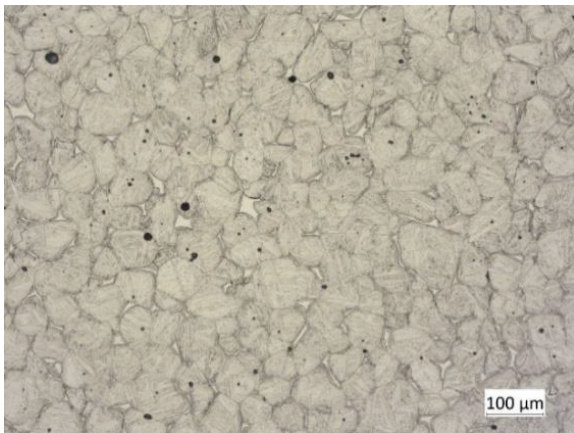
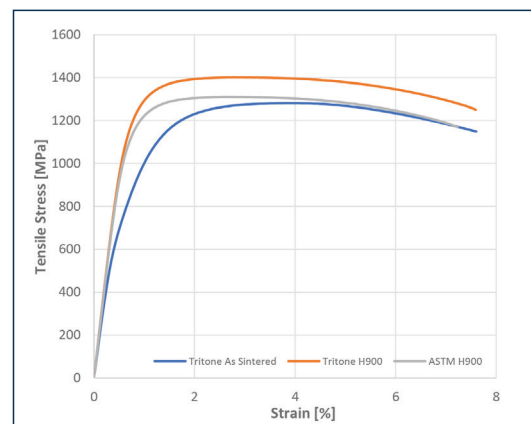


Material datasheet

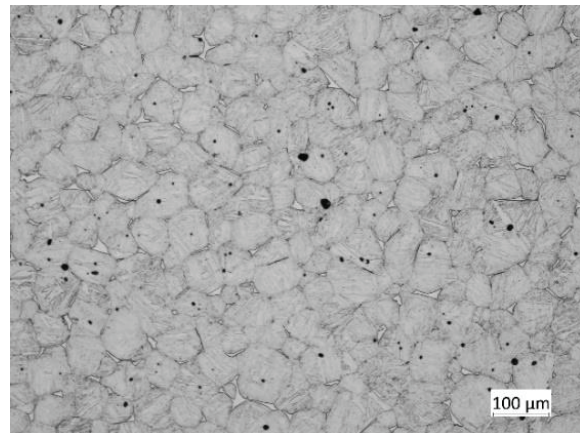
15-5 PH Stainless Steel

Composition – According to ASTM A564-06

Composition	Amount
Carbon	0.07% max
Silicon	1.0% max
Manganese	1.0% max
Phosphorous	0.04% max
Sulfur	0.03% max
Chromium	14.0-15.5%
Nickel	3.5-5.5%
Copper	2.5-4.5%
Niobium + Tantalum	0.15-0.45%
Iron	Bal.



As Sintered



H900

Typical Mechanical Properties

	Standard	Tritone As Sintered	Tritone H900	Wrought H900 ASTM A564
Ultimate Tensile Strength	ASTM E8	1281 MPa	1401 MPa	1310 MPa
0.2% Yield Strength	ASTM E8	808 MPa	1189 MPa	1170 MPa
Elongation at Break	ASTM E8	9.5%	10.5%	10%
Hardness	ASTM E18	38.72 HRC	44.60 HRC	40 HRC
Relative Density	ASTM B962	99.5%	99.5%	100%



Stainless Steel

15-5PH

230x60x40; 2.2Kg



Stainless Steel

15-5PH

45x45x25



alphacam GmbH
Erlenwiesen 16
D-73614 Schorndorf
Tel.: +49 7181 9222-0
info@alphacam.de

alphacam austria GmbH Handelskai
92, Gate1 / 2. OG / Top A
A-1200 Wien
Tel.: +43 1 3619 600-0
info@alphacam.at

alphacam swiss GmbH
Zürcherstrasse 14
CH-8400 Winterthur
Tel.: +41 52 26207-50
info@alphacam.ch

