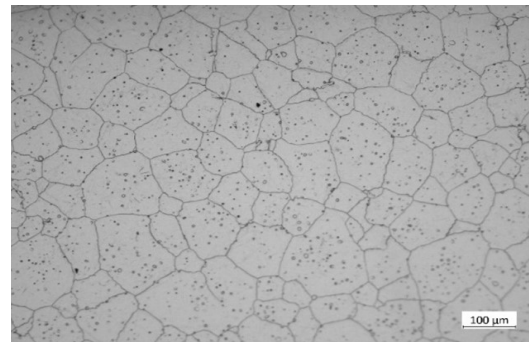
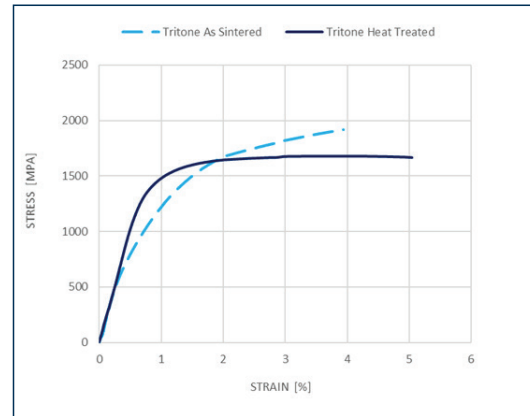


Material datasheet

H13 Tool Steel

Composition – According to ASTM A681

Composition	Amount
Chromium	4.75-5.5%
Molybdenum	1.1-1.75%
Vanadium	0.8-1.2%
Silicon	0.8-1.25%
Carbon	0.32-0.45%
Manganese	0.2-0.6%
Phosphorous	0.03% max
Sulfur	0.03% max
Iron	Bal.



Typical Mechanical Properties

	Standard	Tritone as sintered	Tritone heat treated*	Wrought Heat treated*
Ultimate Tensile Strength	ASTM E8	1921 MPa	1686 MPa	1580 MPa
0.2% Yield Strength	ASTM E8	923 MPa	1341 MPa	1360 MPa
Elongation at Break	ASTM E8	3.9%	4.4%	14%
Hardness	ASTM E18	49.5 HRC	50 HRC	46 HRC
Relative density	ASTM B962	95%	95%	100%

* Properties of as sintered material are affected by the cooling rate of the sintering process.

* Heat treated according to ASTM A681: Standard Specification for Tools Steel Alloy.



alphacam GmbH
Erlenwiesen 16
D-73614 Schorndorf
Tel.: +49 7181 9222-0
info@alphacam.de

alphacam austria GmbH Handelskai
92, Gate1 / 2. OG / Top A
A-1200 Wien
Tel.: +43 1 3619 600-0
info@alphacam.at

alphacam swiss GmbH
Zürcherstrasse 14
CH-8400 Winterthur
Tel.: +41 52 26207-50
info@alphacam.ch



alphacam.de

.at

.ch